



INfINITYHR

DSD  
BUSINESS SYSTEMS

**PROVEN.  
RELIABLE.  
INNOVATIVE.**  
A Better HCM Experience



## PLATFORM INTRODUCTION



## PAYROLL



## COMPLIANCE



## HR MANAGEMENT

- Applicant Tracking System
- Reporting
- Workflow Management
- Performance Management
- Surveys
- Employee Portal



## TIME

- Time & Attendance
- Expense Tracking
- Time-Off Tracking



## EXTENSIONS



## BENEFITS

- Enrollment
- Benefit Management
- Connections



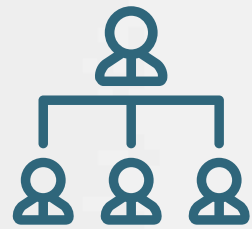
## MOBILE APP



## REQUEST A DEMO

# THE INFINITYHR PLATFORM

Proven. Reliable. Innovative.  
A Better HCM Experience.



HR MANAGEMENT



BENEFITS



PAYROLL



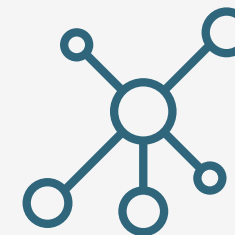
TIME



MOBILE APP



COMPLIANCE



EXTENSIONS

## Get Back To The Work That Matters Most

InfinityHR brings together essential HR tasks in one place, simplifying processes and allowing teams to get back to the work that matters. With a proven track record, the InfinityHR Platform utilizes HR cloud software to oversee all human capital management, payroll, and employee benefit services, helping improve company culture, better engage employees, and allow companies to work more confidently towards business objectives.

InfinityHR provides one completely integrated and secure system at an affordable cost.



# HR MANAGEMENT

Acquire, Keep,  
Manage & Grow Talent



Easily oversee all HR processes in one convenient and secure place. Increase your efficiency by eliminating tedious tasks, and freeing up more time to grow your team's impact on the organization.

## Applicant Tracking System

Finding and onboarding new talent has never been easier. Simplify the entire talent acquisition process, from application to hire.

### Key Features:

- 🔗 Referral source tracking.
- 🔗 Customizable email templates to communicate with applicants.
- 🔗 Onboarding and workflow integration.
- 🔗 EEO Reporting.
- 🔗 Integrated with ZipRecruiter – reach 20 million job seekers.
- 🔗 Employment Screenings powered by Aurico.

“Infinity HR is a terrific tool for my team and for all of our employees. We received a lot of feedback about the ease of the system, and how intuitive it is. I'm thrilled with this.”

**-Andy Katzman**

Managing Director

*People and Culture, GrowthPlay*



# 83% OF TALENT & HR LEADERS SAY THEY MEET WITH THE C-SUITE REGULARLY – MAKE THOSE MEETINGS COUNT WITH POWERFUL REPORTING.

source: <https://www.slideshare.net/pedrooolito/linkedin-global-recruiting-trends-report-2017>

## Reporting

Take the work out of building your reports with our ready-to-go library.

Utilize over 200+ standard reports across all modules, and export them to PDF or MS Excel. Be armed with the data you need to have meaningful conversations with the decision makers at your organization. Our reporting engine electronically creates and delivers benefit data to 300+ carriers with our custom report-writing wizard.

### Key Features:

#### STANDARD REPORTS

- 🔗 Hundreds of pre-built reports available across all modules.
- 🔗 One-click access.
- 🔗 Exportable to PDF or MS Excel.

#### ADVANCED REPORTS

- 🔗 Electronically deliver benefit files in HIPAA 834 format.
- 🔗 Established relationships with 300+ carriers.
- 🔗 Custom report writing wizard.
- 🔗 View a full history of all exports.
- 🔗 ACA compliance reporting.



## Workflow Management

Create a more efficient onboarding process that allows you to add and manage new employees easily, delivering the ideal first-day welcome. Our module ensures your team is checking off each task needed to bring new hires up to speed.

Integrate EZSign to simplify your processes, and use prefilled forms and a digital signature collector to complete legally-compliant documents much faster, from any device.

### Key Features:

- 🔗 Trigger workflow automatically.
- 🔗 Include as many steps and resources as needed.
- 🔗 Schedule emails to remind others to complete tasks.
- 🔗 Attach documents to the workflows.

**NEW HIRES THAT  
UNDERGO A  
STRUCTURED  
ON-BOARDING  
PROGRAM ARE 58%  
MORE LIKELY TO BE  
WITH THE COMPANY  
AFTER THREE  
YEARS.**

**78% OF  
EMPLOYEES  
SAID BEING  
RECOGNIZED  
MOTIVATES  
THEM IN  
THEIR JOB.**

## Performance Management

Making employee performance easy to document and analyze. Record job descriptions, employee training, and annual reviews to ensure every member of your organization is performing to the best of his or her ability.

### Key Features:

- 🔗 Define corporate objectives and link to employee Key Performance Indicators (KPI's).
- 🔗 Complete performance reviews directly through the Employee Portal.
- 🔗 Define position descriptions, training profile, skill profile, and performance goals
- 🔗 Track training and certification programs with an automated renewal process.
- 🔗 Easily identify trends in employee behaviors and performance.



## Surveys

Get faster, more helpful feedback by creating packaged online surveys that can be easily completed by your employees. Allow for an open channel of communication by enabling anonymous submissions and scored assessments.

### Key Features:

- 🔗 Create customizable employee surveys.
- 🔗 Anonymous submission.
- 🔗 Scored assessment.
- 🔗 Revise a ready-made template in the Survey Library, or design an entirely new one.
- 🔗 Keep track of which employees have completed the survey and send reminders to those who haven't.
- 🔗 Standardized professional survey reports that include summary reports, graphical reports, and detail reports.





“InfinityHR has helped us produce accurate data and reports and is easy for our employees to use and access their information.”

**-Erika Zwissler**

*Sequel Youth and Family Services*

## Employee Portal

Easily engage employees directly with personalized HR-related information. Employees are able to manage their benefits and make changes and comparisons themselves in a convenient and accessible platform.

Configure the Employee Portal to include the modules your organization values most. The ability to have greater control over their benefits information creates a more engaged and satisfied workforce – and less time spent with HR completing tedious tasks on the clock.

### *Key Features for Employees:*

- 🔗 Compare, analyze and check plan costs prior to benefits enrollment.
- 🔗 View the value of their compensation package with Personalized Total Compensation Statements.
- 🔗 Submit time information, including clocking in and out.
- 🔗 Request time off and check time-off balances.
- 🔗 Submit expense reports to managers for approval.
- 🔗 View and print check stubs, W-2 and ACA forms.
- 🔗 Track goals and review them throughout the year.
- 🔗 Electronically submit benefit and HR-related changes for review and approval.
- 🔗 View company and benefits information anytime, anywhere.
- 🔗 Make changes to direct deposit records within the Employee Portal.
- 🔗 Enter demographic information, including emergency contacts, dependents federal and state taxes and much more.

# BENEFITS

## Enrollment, Management & Connections



Streamline benefits management for everyone. Facilitate the collaboration of employees, benefit administrators, carriers, and payroll deductions in one system, while increasing communication and efficiency.

### Enrollment

Take the headache out of Open Enrollment by allowing employees to compare, analyze, and check plan costs prior to enrollment. Give employees access to benefit documentation and videos all in one place.

As an administrator, review everything for accuracy, to ensure a successful Open Enrollment. You can easily assess employees who have not completed an event and send email reminders directly from the system.

**86% OF SURVEYED  
CLIENTS AGREE THAT  
THE INFINITY OPEN  
ENROLLMENT EVENT  
MADE THE  
ENROLLMENT  
PROCESS EASIER  
FOR THEM TO  
MANAGE.**



## Benefit Management

Employees have direct input on their benefit elections and can access these benefits 24/7. These decisions have a lasting impact on employees – our module helps educate them to make smarter benefit choices.

### Key Features for Employees:

- ⌘ Access benefit related information 24/7.
- ⌘ Compare, analyze and check plan costs prior to enrollment.
- ⌘ View a consolidated benefit statements at any time.

### Additional Key Features:

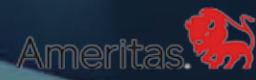
- ⌘ Rules-based eligibility engine to ensure employees only see benefits they are eligible to enroll in.
- ⌘ Reconcile premium bills.
- ⌘ sState-of-the-art security for your data.
- ⌘ Easy approval and management of employee benefits.
- ⌘ Benefits data and changes are automatically sent to your carriers once Electronic Data Interface (EDI) is established.
- ⌘ Benefit deductions can be sent directly to payroll.

**84% OF  
EMPLOYEES  
WITH HIGH  
BENEFIT  
SATISFACTION  
REPORT HIGH  
JOB  
SATISFACTION.**

## Connections

Stay connected with your partner organizations through the InfinityHR Benefits module. Automatically sync with the companies you already work with, for smoother processes and increased communication.

View our list of connections [HERE](#).



OVER **300**  
CONNECTIONS  
MEANS  
INTERCONNECTIVITY  
THAT NEVER STOPS.



# PAYROLL

Reliable, Intuitive  
& Seamless



Effortlessly connect your HR software with payroll in one location. Payroll processing is easier than ever, and your data can be managed, updated, or deleted, saving you time by avoiding duplicate or lost data.

For increased efficiency, implement InfinityHR EZSync and connect HR and payroll like never before.

“With InfinityHR, it takes less time  
to process payroll.”

**- Maureen Beutler**  
Human Resources Manager  
*Holmberg Co. Inc.*

## Key Features – EZSync:

- Efficient data load utilities to pull employee and payroll data directly into the InfinityHR application, making implementation of new groups as simple as it gets.
- Sync data in real-time, including employee records, such as demographics, compensation rates and transactions, direct deposit, deductions and taxes (federal, state, local).
- Enhanced data validation to ensure accuracy of data between InfinityHR and payroll.
- Data audit tools.
- Configurable data synchronization settings.
- Sync data from a single HR account to multiple payroll companies.

## Key Features – EZPay:

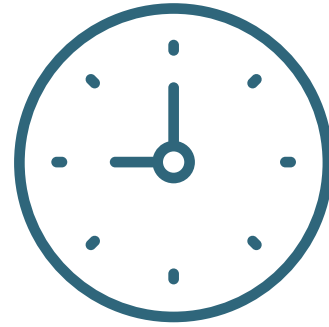
### OUR PROPRIETARY PAYROLL MODULE:

- Process payroll for multiple payroll companies from within the InfinityHR payroll module.
- Access standard batch reports and various batch and payroll-level controls (configurable pay entry grid, time import capability, multiple checks).
- Employee check previews.
- Detailed payroll entry capability across all applicable deductions, earnings, and tax codes.
- Gain easy access to critical payroll data through multiple views.
- Automated generation of paystubs and W2's.
- Create and print manual checks in-house.
- Time import functionality.
- Paycheck overrides (tax frequencies, block earnings/ deduction codes, block direct deposits).
- Unlimited deduction earning tax codes.
- Agency payables with check delivery options.
- Process payroll for multiple EIN's.



# TIME

## Record Time, Track Expenses & Grant Time Off



Keep track of employees' time, attendance, expense reports, and time off. Customize with your organization's standards to track and approve time, and automatically connect to your payroll provider.

### Time and Attendance

Allow employees to enter their time, and managers to approve it, through one simple system. All data is electronically routed to your payroll provider, allowing for faster and easier connections.

#### Key Features:

- 🔗 Capture time data through a flexible entry system that features punches in the employee portal, integration with a physical time clock, timesheets, or a kiosk setup.
- 🔗 Employee identification methods include 4-digit pin, card swipe, or fingerprint scan.
- 🔗 Managers can review and approve time for employees directly through the Employee Portal. Settings can also be configured to empower managers with various time data.
- 🔗 Extensive pay period reporting.

### Time-Off Tracking

Define how employees should earn time off, and automatically calculate available time off for each employee based on your set, standardized rules.

#### Key Features:

- 🔗 Automatically calculate available time off for each employee.
- 🔗 Employees can request time off through the employee portal. Employee requests are automatically routed to the appropriate manager for approval.
- 🔗 Allows employees to view balances and accrual transactions through their employee portal.
- 🔗 Allows managers to configure reporting/ routing hierarchies quickly.
- 🔗 Provides a reporting dashboard to administrators for tracking trends in their time off data and analyzing how employees are utilizing time off.

### Expense Tracking

Monitor your company's expenses, and get a clearer, more accurate understanding of your business costs. With this improved insight into your business's finances, you can make smarter business decisions and improve profitability.

#### Key Features:

- 🔗 Full visibility into all expenses by tracking all business costs.
- 🔗 Quickly review and approve expense submissions.
- 🔗 Categorize cost center-related expenses and employee reimbursements.
- 🔗 Configure reports to organize and view data the way you need it.





Username

Password

Login

[First Time User](#)

[Reset ID or Password](#)

[System Requirements](#)

# MOBILE APP



HR Where  
You Are

Get the HR information you need wherever you are. Allow employees to access time and labor management, benefits, and self-service systems, anytime, anywhere in one secure and accessible place.

## Key Features:

### TIME CARD

Employees can request time off and view their PTO summary directly from the mobile app. Employees on the go now have the convenience of clocking in and out through the app and managers have the visibility to review time cards.

### BENEFITS MANAGEMENT

Employees can review their benefit statements and download PDF statements.

### EMPLOYEE SELF SERVICE

The employee directory allows you to search for employees by name, department, or position from wherever you are with ease. Easily locate phone numbers and emails at the touch of a button. The app also makes it easy to view and download your latest paycheck stub details.

## COMPLIANCE

ACA Compliance, Reporting,  
& Secure Data



Save time by using existing data to analyze employees, their benefits, compensation, and demographics to effortlessly produce and send all 1094 and 1095 reporting to employees and the IRS.

An HR team can cut the time spent on the reporting process in half, allowing them to focus more on their core responsibilities and meeting business objectives.

### Key Features:

- ⌘ Alerts.
- ⌘ Ability to offer employees coverage at the click of a button.
- ⌘ FTE/ALE forecasting.
- ⌘ Personalized ACA profiles.
- ⌘ E-Filing.
- ⌘ Easy access for employees.
- ⌘ Multiple EIN reporting.
- ⌘ 1094/1095 form generation.

**70% OF  
EMPLOYERS  
SAY KEEPING  
UP WITH  
CHANGING  
COMPLIANCE  
LAWS IS  
DIFFICULT.**



# EXTENSIONS

Interconnectivity That Doesn't Stop



## Acumatica ERP Integration & Netsuite ERP Integration

Our integration with Acumatica creates a single point of entry for employee data, which flows between your suite of applications in real time.

### Key Features:

- ⌘ System utilities load company level fields from Acumatica into the InfinityHR application. This produces a quick, accurate and efficient means of implementing your clients on the InfinityHR application.
- ⌘ Data is pushed back in real-time to the Acumatica platform and updates new hires, changes in demographics and terminations.
- ⌘ Allows Acumatica users access to InfinityHR's HCM solution.

## Sage Integration

**The Sage 100 ERP** integration is an automated data feed that allows the import of specific data to flow into the Sage 100 ERP application.

**The Sage 100 Contractor** integration is automated via web service integration and allows the import of specific data to flow into the Sage 100 Contractor application.

**The Sage 300 integration** is an automated data feed that allows the import of specific data to flow into the Sage 300 application.



# OUR PARTNERS





A hand holding a pen over a desk with a laptop, calculator, and papers.

**SCHEDULE A  
DEMO TODAY!**

[sales@infinity-ss.com](mailto:sales@infinity-ss.com)

“InfinityHR has improved the HR Process through less paper pushing and allowing more strategic focus.”

**- Rogene Smith**

Director of Human Resources  
Conductix-Wampfler

**CALCULATE POTENTIAL ROI!**

[infinity-ss.com/roi-calculator](http://infinity-ss.com/roi-calculator)





INFINITY-SS.COM

9362 E. RAINTREE DRIVE, SCOTTSDALE, AZ 85260

PHONE: 1-866-TRY-HRMS EMAIL: SALES@INFINITY-SS.COM

